

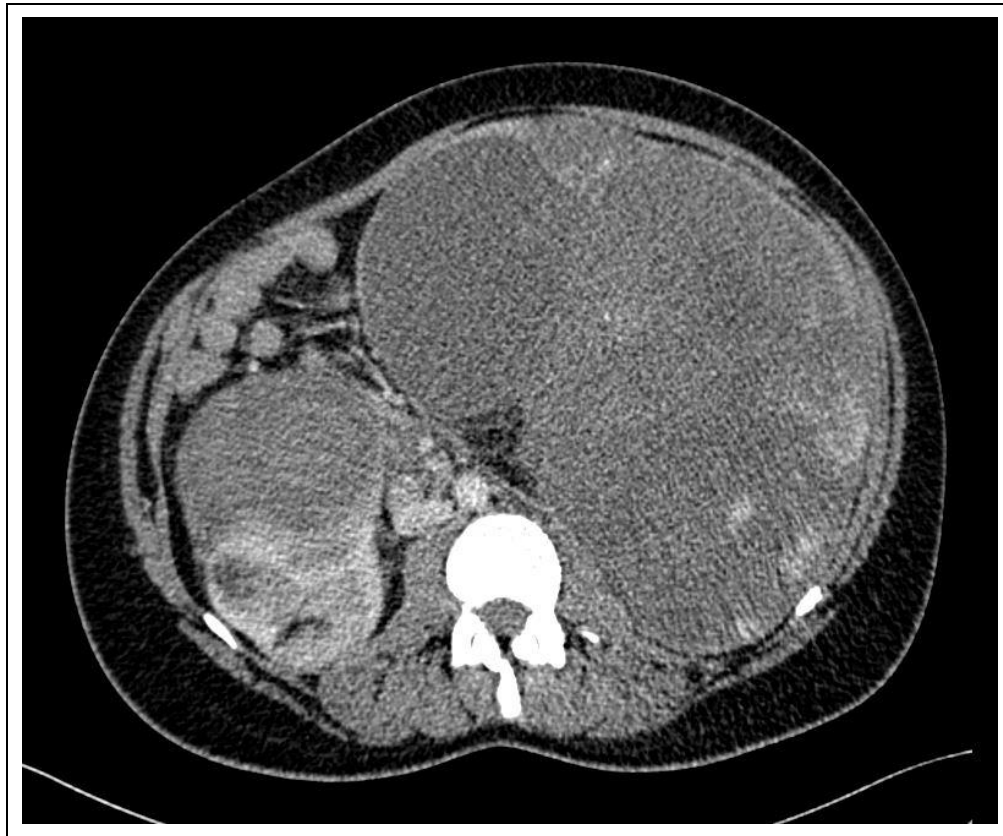
Bilateral Sporadic Renal Angiomyolipoma

Julian Cox*, Maxine Fronck and Susanne Osborne

Specialist Centre for Kidney Cancer, Royal Free London NHS Foundation Trust, London, United Kingdom

*Corresponding author: Julian Cox, Specialist Centre for Kidney Cancer, Royal Free London NHS Foundation Trust, London, United Kingdom. E-mail: coxjulian93@hotmail.com

Received: November 27, 2024; Accepted: December 10, 2024; Published: December 15, 2024



Clinical Image

A 38-year-old woman without tuberous sclerosis of Bourneville. The history of the disease went back 6-years before the consultation, by the installation of chronic low back pain without particular irradiation, admitted to the emergency room for deterioration of general condition associated with clots in hematuria. On physical examination, a palpable mass in the left flank was noted. Results of Serum creatinine and urinalysis test results showed hemoglobin (Hb) 4.4 mg/dL, mild leukocytosis, C-reactive protein (CRP) 9.73 mg/dL, and a serum creatinine level of 1.6 mg/dL.

An abdominal computed tomography showed a large regular tumor syndrome on the left, corresponding to 62.2/78.1 mm in large diameter. The tumor has a mixed aspect of fatty and tissue density, with areas hypodense in favor of intra-renal bleeding. This aspect evoked a complicated renal angiomyolipoma.